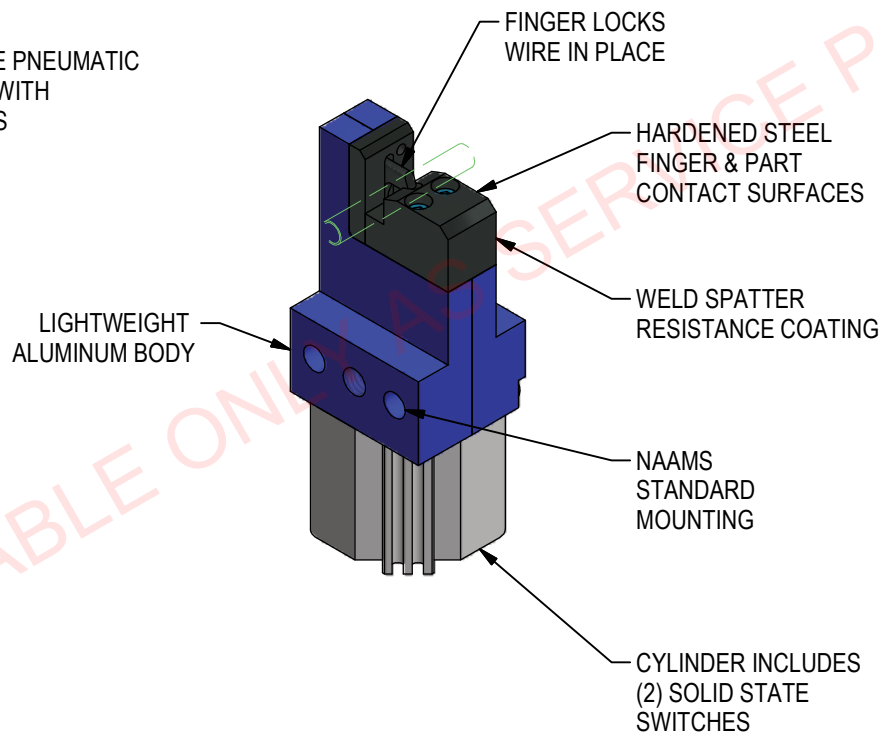


WIRE CLAMP

FOR WIRE DIAMETERS 3mm THRU 10mm

S01728

25mm BORE PNEUMATIC
CYLINDER WITH
5mm PORTS



APPLICATIONS:

SEATING

INSTRUMENT PANELS

APPLIANCE MANUFACTURING

EXHAUST

RELEASED 4/22/21

ORDERING INFORMATION

NOTE: ALL BOXES MUST BE FILLED IN FOR A COMPLETE PART NUMBER

S	0	1	7	2	8	-				0	0	
---	---	---	---	---	---	---	--	--	--	---	---	--

Wire _____

070 3.0mm thru 10.0mm Wire Dia.
Example : 070 = 7.0mm Wire Dia.

Actuator _____

00 With Cylinder
LC Without Cylinder

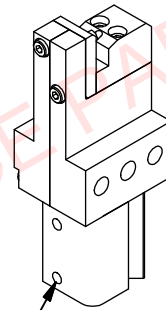
Port Position _____

A P1 Port Position
B P2 Port Position
C P3 Port Position
D P4 Port Position
0 Without Cylinder

REPLACEMENT CYLINDER

ORDER #S01728-CYL

See sheet 5 for instructions



PORTS SHOWN
IN POSITION P1:
OPTION "A"

WIRE CLAMP WORKSHEET

Project	Station #	Date	
Customer	Contact	Email	Phone

NOMINAL WIRE DIAMETER: _____ + Tolerance ± _____ = _____ Max Dia.

Part print attached

RECOMMENDED OPENING SIZE:

Series	Application	Opening size
S01728	ALL	Maximum diameter + 0.2mm

Part # _____

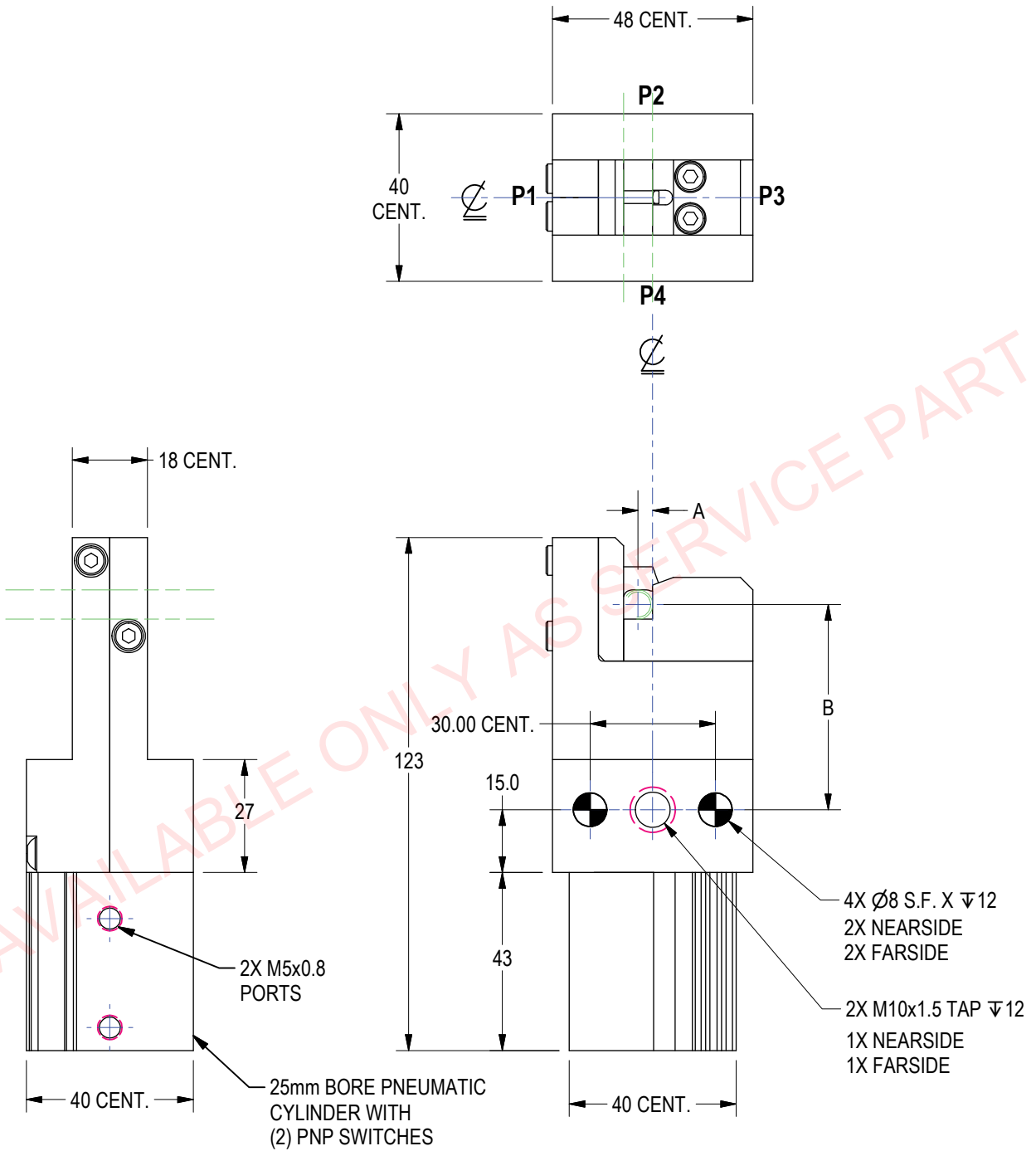
Approval _____

(DO NOT SCALE DRAWING)

ENGINEERED PRODUCTS

800-229-0890 www.welkerproducts.com

S01728 GENERAL DIMENSIONS



WIRE DIA.	DIM. A	DIM. B
3mm	5.5	51.0
4mm	5.0	50.5
7mm	3.5	49.0
10mm	2.0	47.5

(DO NOT SCALE DRAWING)

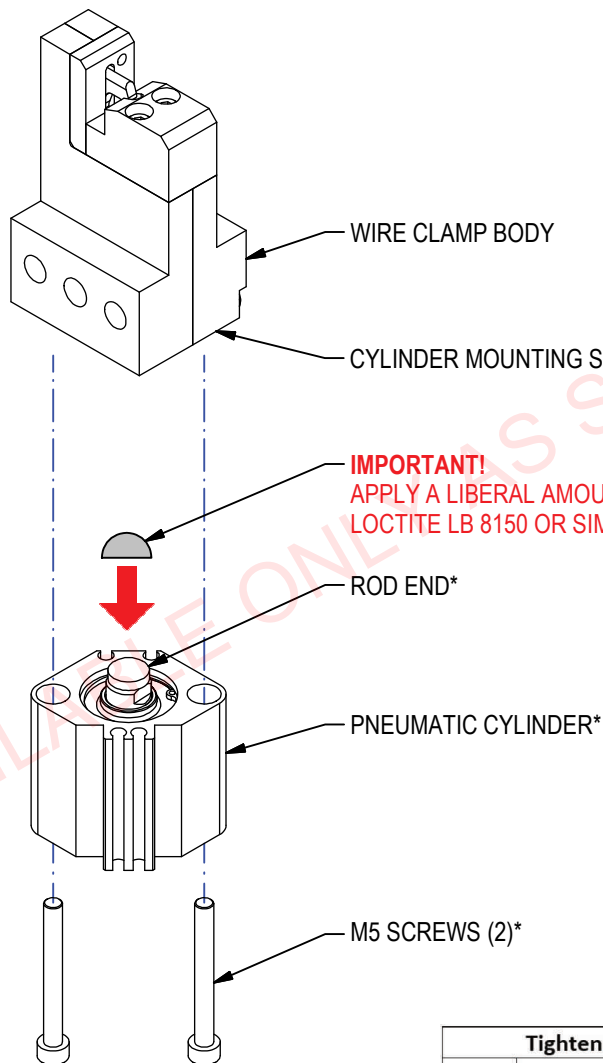
PNEUMATIC CYLINDER REPLACEMENT

1. DISCONNECT AIR SUPPLY.
2. REMOVE M5 SCREWS SECURING CYLINDER TO CLAMP. REMOVE CYLINDER, NOTING PORT POSITION.
3. CLEAN CYLINDER MOUNTING SURFACE OF CLAMP BODY.
4. APPLY A LIBERAL AMOUNT OF ANTI-SEIZE TO TOP OF ROD END: LOCTITE LB 8150 OR SIMILAR.
5. INSTALL CYLINDER TO CLAMP. SECURE WITH M5 SCREWS. USE REMOVABLE THREAD ADHESIVE ON ALL SCREWS.
6. TIGHTEN TO TORQUE SHOWN.

REPLACEMENT CYLINDER

ORDER #S01728-CYL

*INCLUDED IN KIT



IMPORTANT!
APPLY A LIBERAL AMOUNT OF ANTI-SEIZE TO TOP OF ROD END
LOCTITE LB 8150 OR SIMILAR



Tightening Torques for Metric Bolts (installed dry)				
	Steel		Aluminum	
M5	10 Nm	7.4 ft lb.	5 Nm	3.7 ft lb.
M6	19 Nm	14.0 ft lb.	9.5 Nm	7.0 ft lb.
M8	45 Nm	33.2 ft lb.	22.5 Nm	16.6 ft lb.
M10	89 Nm	65.6 ft lb.	44.5 Nm	32.8 ft lb.
M12	156 Nm	115.1 ft lb.	78 Nm	57.6 ft lb.

(DO NOT SCALE DRAWING)

