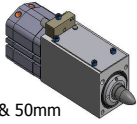




**INLINE PIN MOUNTING SHOT PIN SELECTION**

**RS4**



- Stroke: 25mm & 50mm
- Max side load on ram: 50 lbs.
- Standard Integral switch
- Actuator
  - Pneumatic: 50mm bore compact
  - Electric: DC Stepper motor
- Single NAAMS locating pin

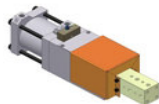
**UB4**



- Stroke: 25mm, 50mm & 75mm
- Max side load on ram: 100 lbs.
- Standard Integral switch
- Actuator
  - Pneumatic 70mm bore
- Single NAAMS locating pin

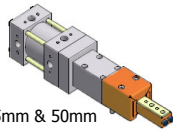
**OFFSET PIN MOUNTING SHOT PIN SELECTION**

**UB4**



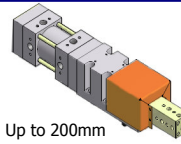
- Stroke: 25mm, 50mm & 75mm
- Max side load on ram: 100 lbs.
- Max offset: 150mm
- Standard Integral switch
- Actuator
  - Pneumatic: 70mm bore
  - NEXT DAY SHIPMENT**
- Multiple locating device capable
  - Pins, backups

**WP2**



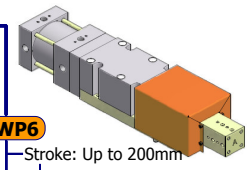
- Stroke: 25mm & 50mm
- Max side load on ram: 50 lbs.
- Max offset: 100mm
- Switch ready
- Actuator
  - Pneumatic Compact: 50mm bore
  - NEXT DAY SHIPMENT**
  - Pneumatic: 63mm bore
- Single locating device only
  - Pin <25mm

**WP4**



- Stroke: Up to 200mm
  - In 25mm increments
- Max side load on ram: 100 lbs.
- Max offset: 150mm
- Switch ready
- Actuator
  - Pneumatic Compact: 63mm bore
  - NEXT DAY SHIPMENT**
  - Pneumatic: 63mm bore
  - Hydraulic: 40mm bore
- Multiple locating device capable
  - Pins, backups

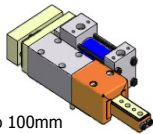
**WP6**



- Stroke: Up to 200mm
  - In 25mm increments
- Max side load on ram: 250 lbs.
- Max offset: 200mm
- Switch ready
- Actuator
  - Pneumatic: 100mm bore
  - NEXT DAY SHIPMENT**
  - Pneumatic Compact: 100mm bore
  - Hydraulic: 80mm bore
- Multiple locating device capable
  - Pins, backups

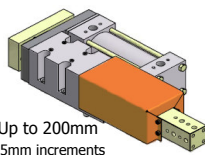
**OFFSET PIN MOUNTING SIDE BY SIDE SHOT PIN SELECTION**

**SB2**



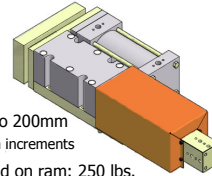
- Stroke: Up to 100mm
  - In 25mm increments
- Max side load on ram: 50 lbs.
- Max offset: 100mm
- Switch ready
- Actuator
  - Pneumatic: 40mm bore
- Single locating device only
  - Pin <25mm

**SB4**



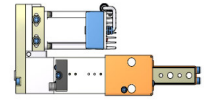
- Stroke: Up to 200mm
  - In 25mm increments
- Max side load on ram: 100 lbs.
- Max offset: 150mm
- Switch ready
- Actuator
  - Pneumatic: 63mm bore
- Multiple locating device capable
  - Pins, backups

**SB6**



- Stroke: Up to 200mm
  - In 25mm increments
- Max side load on ram: 250 lbs.
- Max offset: 200mm
- Switch ready
- Actuator
  - Pneumatic: 100mm bore
- Multiple locating device capable
  - Pins, backups

**EB2**



- Stroke: 25mm & 50mm
- Max side load on ram: 50 lbs.
- Max offset: 100mm
- Standard Integral switch
- Actuator
  - 24V DC Motor
- Single locating device only
  - Pin <25mm