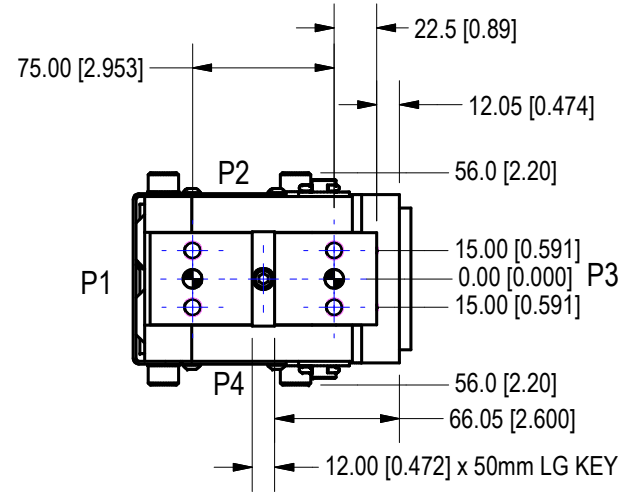


*1.5[.06] PRIOR TO THE END OF VERTICAL LIFT, PLATE BEGINS TIPPING MOTION



ORDERING INFORMATION

SPE 030 A 01 0 A 00 1 A 0 00

Angle
030

Actuator

- 01 Welker 70mm Bore w/ NPT Ports
- 02 Welker 70mm Bore w/ G Ports
- 03 Welker 70mm Bore DBL Rod w/ NPT Ports
- 04 Welker 70mm Bore DBL Rod w/ G Ports
- 05 Welker 100mm Bore w/ NPT Ports
- 06 Welker 100mm Bore w/ G Ports
- 07 Welker 100mm Bore DBL Rod w/ NPT Ports
- 08 Welker 100mm Bore DBL Rod w/ G Ports

Mount

- A Mounting Base as Shown
- B Mounting Base Rotated 180deg

Port Position

- A Port @ Pos.1 (Shown)
- B Port @ Pos.2
- C Port @ Pos.3
- D Port @ Pos.4

Sw. Bracket Position

- 0 For All Sw Except 01
- 1 Bracket @ Pos.1 (Shown)
- 2 Bracket @ Pos.2
- 3 Bracket @ Pos.3
- 4 Bracket @ Pos.4

Switch Options

- 00 No Switching Req'd
- L0 Cylinder Switch
- 01 18mm Barrel Switch Bracket (Requires DBL Rod Cyl)

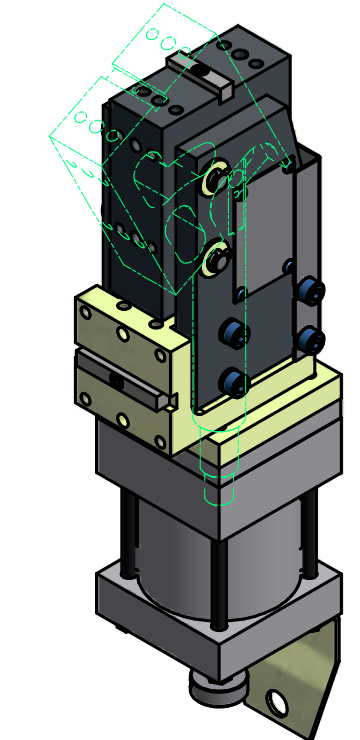
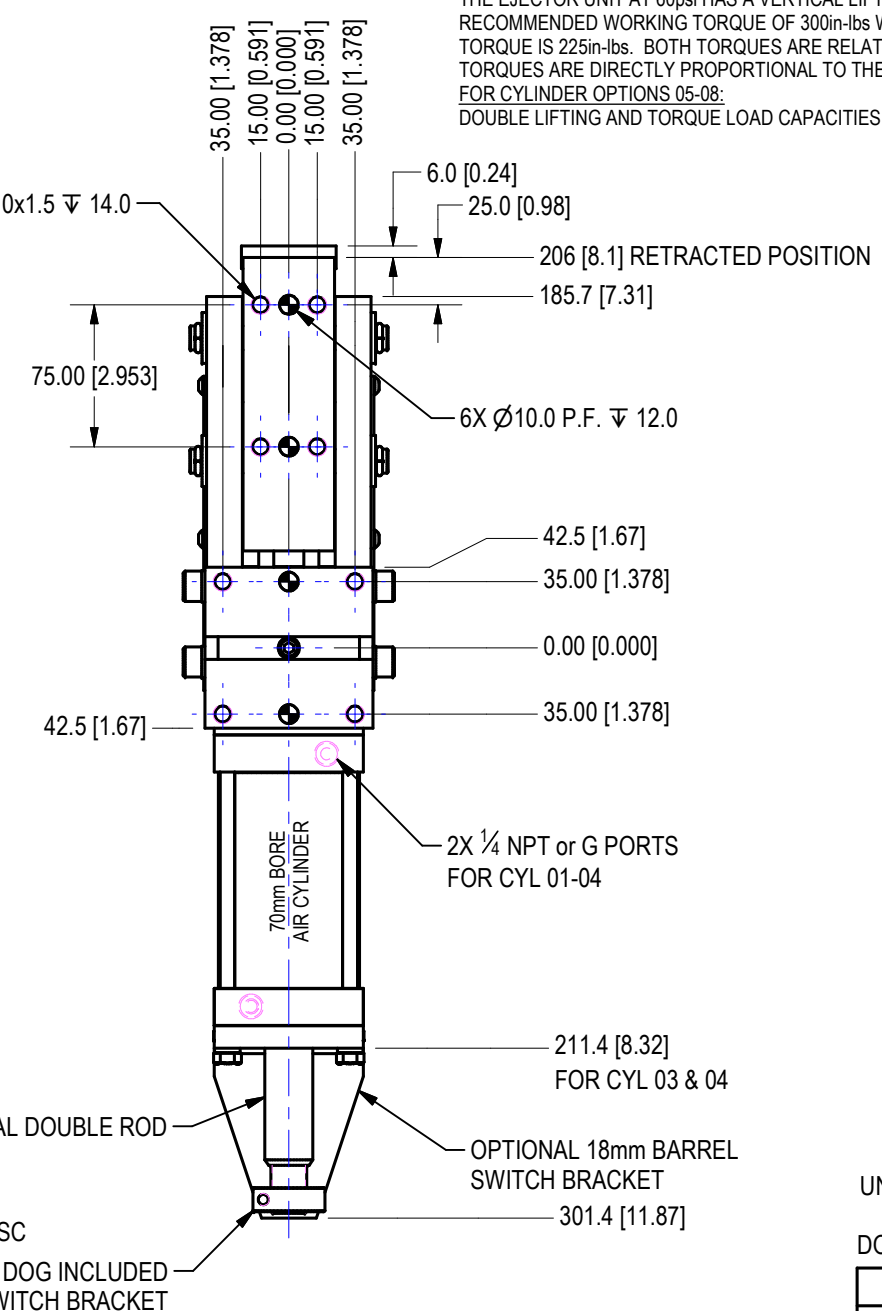
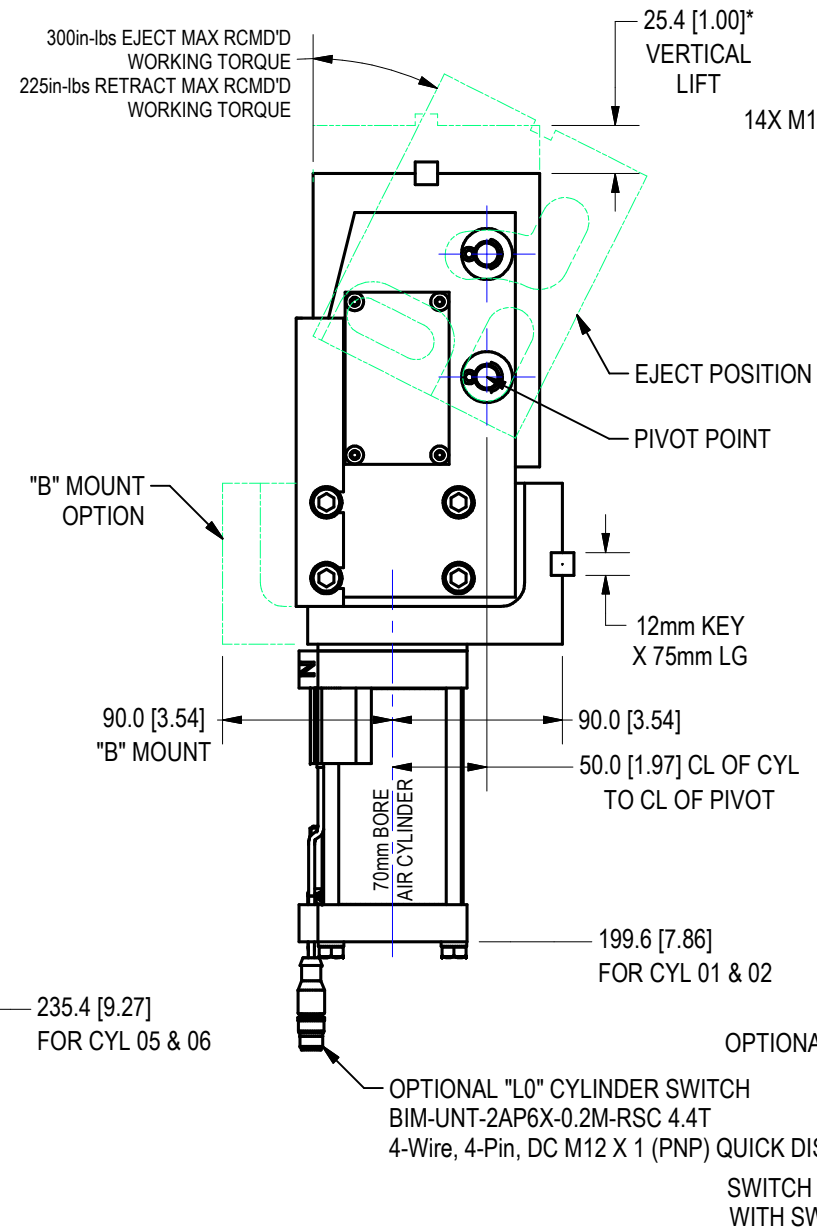
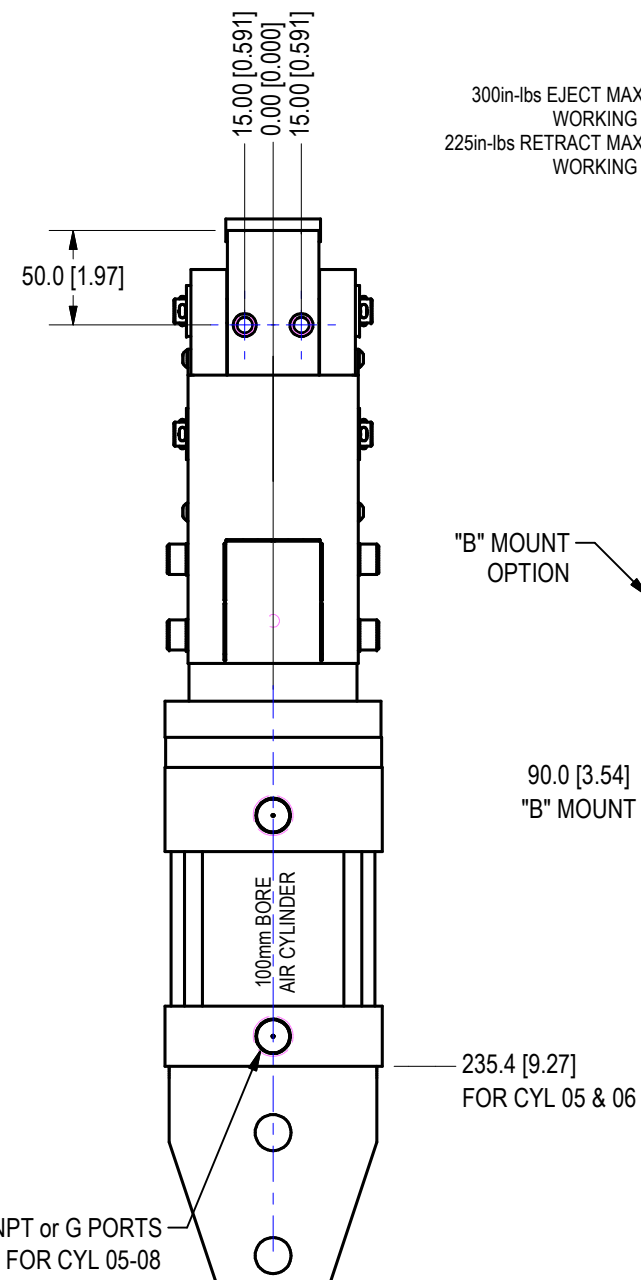
LOADING CAPACITY:

FOR CYLINDER OPTIONS 01-04:

THE EJECTOR UNIT AT 60psi HAS A VERTICAL LIFTING CAPACITY OF 200lbs WITH AN EJECT MAX RECOMMENDED WORKING TORQUE OF 300in-lbs WHILE THE RETRACT MAX RECOMMENDED WORKING TORQUE IS 225in-lbs. BOTH TORQUES ARE RELATIVE TO THE PIVOT POINT. THE LIFT FORCE AND TORQUES ARE DIRECTLY PROPORTIONAL TO THE AIR PRESSURE.

FOR CYLINDER OPTIONS 05-08:

DOUBLE LIFTING AND TORQUE LOAD CAPACITIES FROM CYL OPT 01-04



UNIT WEIGHT = APPROX. 43.5 lbs

UNITS ARE MILLIMETERS (i.e.X.XXmm [x.xxx"])
DO NOT SCALE DRAWING

DATE		STATUS		DRAWN BY		DATE		CHK'D BY		ENG APPROVAL	
10/9/2011		Released		GSK		10/9/2011		DJH			
SCALE		1:2		FILE NAME		SPE30L01					

WELKER	
BEARING COMPANY	
TOOL NAME PART EJECTOR ASSEMBLY	
TEMPLATE	