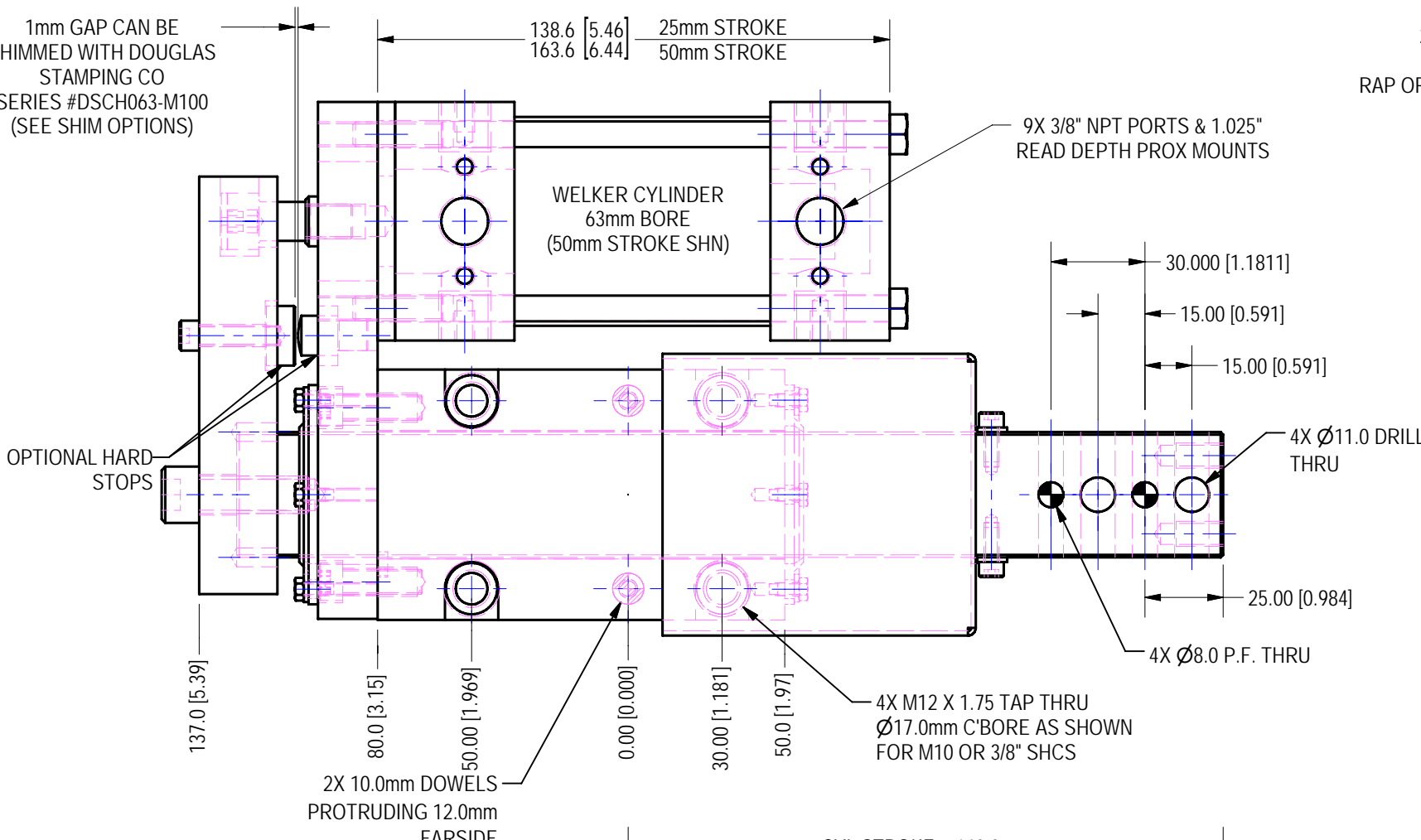


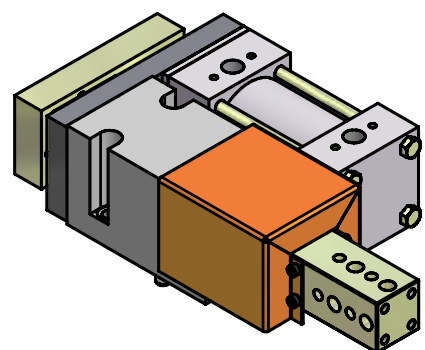
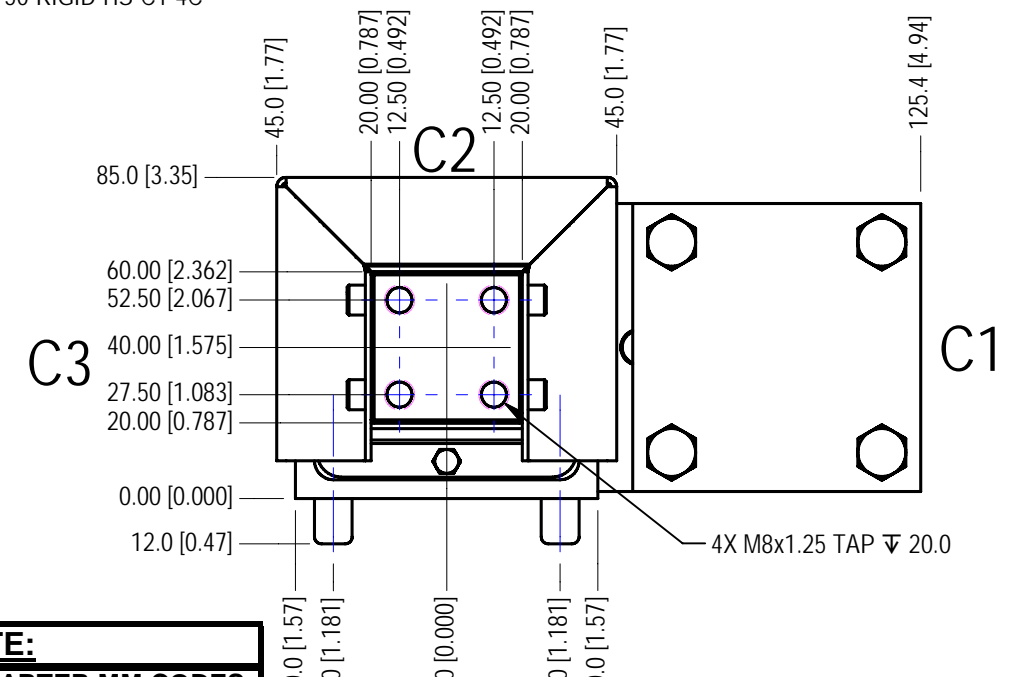
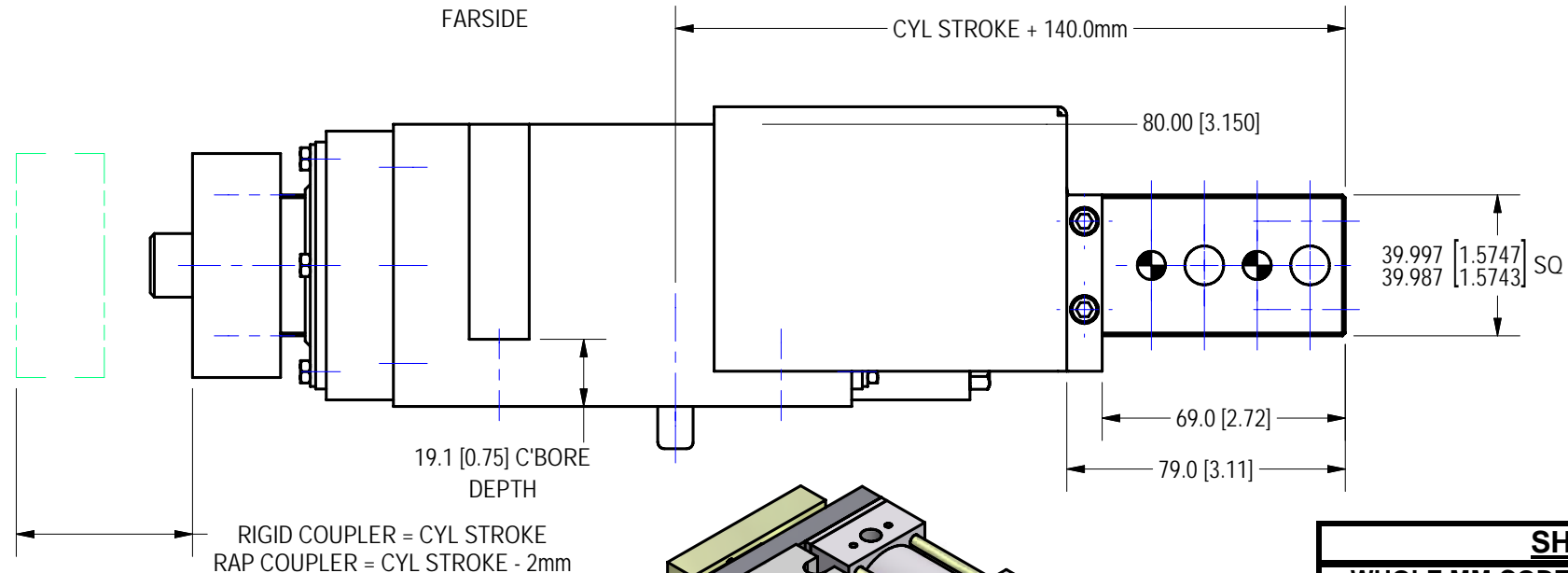
1mm GAP CAN BE SHIMMED WITH DOUGLAS STAMPING CO SERIES #DSCH063-M100 (SEE SHIM OPTIONS)



ORDER NUMBER:
 #SBS40-{STROKE}-{HYD. CYL OPTION}-{COUPLER}-{HARD STOP OPTION}-{CYLINDER POSITION}-{SHIM}
 25-50mm _____ (SEE SHIM NOTE)
 H _____ C1, C2, C3
 RAP OR RIDGID _____ HS

OPTIONS NOTES:
 1) **CYL OPTION:** SBS40 COMES STANDARD WITH WELKER 63mm BORE AIR CYLINDER, UNLESS HYDRAULIC OPTION, "-H", IS SPECIFIED. HYDRAULIC CYLINDERS HAVE 40mm BORE. DO NOT OPERATE ABOVE 200 PSI.
 2) **COUPLER OPTION:** RAP COUPLING CAUSES THE UNIT STROKE TO BE 2mm[.08"] LESS THAN THE NOMINAL STROKE OF THE CYLINDER. UNLESS OTHERWISE SPECIFIED, THE PNEUMATIC CYLINDER COMES STANDARD WITH THE RAP COUPLING AND THE HYDRAULIC CYLINDER COMES STANDARD WITH THE RIGID COUPLING.
 3) **HARD STOP OPTION:** SBS40 DOES NOT COME STANDARD WITH THE HARD STOPS. HARD STOP OPTION IS NOT AVAILABLE WITH THE HYDRAULIC CYLINDER OPTION.
 4) **CYLINDER POSITION OPTION:** BOTH PNEUMATIC & HYDRAULIC UNITS COME STANDARD WITH CYLINDER IN POSITION SHOWN.
 5) **SHIM OPTION:** SHIM SIZES CAN BE ORDERED IN .25mm INCREMENTS FROM .25mm-5mm, HARD STOP OPTION MUST BE USED IF ORDERING SHIMS. DUE TO CYL SWITCH LIMITATIONS, SHIMMING PAST 5mm IS NOT RECOMMENDED. LEAVE BLANK IF NO SHIMS REQUIRED
 6) UNIT COMES WITH SHROUD AS STANDARD. TO ORDER WITHOUT SHROUD ADD "-NS" SUFFIX TO PART NUMBER.

PART NUMBER EXAMPLES:
 TO ORDER UNIT AS SHOWN WITH 50mm STROKE, RIGID COUPLING, & HARD STOP OPTION, ORDER AS:
 #SBS40-50-RIGID-HS-C1
 TO ORDER UNIT AS SHOWN WITH A RAP COUPLING & NO SHROUD:
 #SBS40-48-HS-C1-NS
 TO ORDER UNIT AS SHOWN WITH HYDRAULIC CYLINDER, RIGID COUPLER AND NO HARD STOP:
 #SBS40-50-H-C1
 TO ORDER UNIT AS SHOWN WITH HYDRAULIC CYLINDER, RAP COUPLER AND NO HARD STOP:
 #SBS40-48-H-RAP-C1
 TO ORDER UNITS AS SHOWN, RIGID COUPLING, HARD STOP OPTION, & WITH A 4.75mm SHIM
 #SBS40-50-RIGID-HS-C1-4C



SHIM NOTE:

WHOLE MM CODES		QUARTER MM CODES	
THK (mm)	CODE	.25 THK (mm)	CODE
1	1	0.00	0
2	2	0.25	A
3	3	0.50	B
4	4	0.75	C
5	5		

UNIT WEIGHT 23 LBS.

WELKER BEARING COMPANY

TOOL NAME: SBS-40 SERIES SHOTPIN - 25-50 STROKE

TEMPLATE

DATE	STATUS	DRAWN BY	DATE	CHK'D BY	ENG APPROVAL
2/18/2005	Quick Change	GSK	9/4/2005	DJH	
SCALE		HALF		FILE NAME	SBS40L01-2

UNITS ARE MILLIMETERS (i.e. XXmm [x.xxx"])
 DO NOT SCALE DRAWING