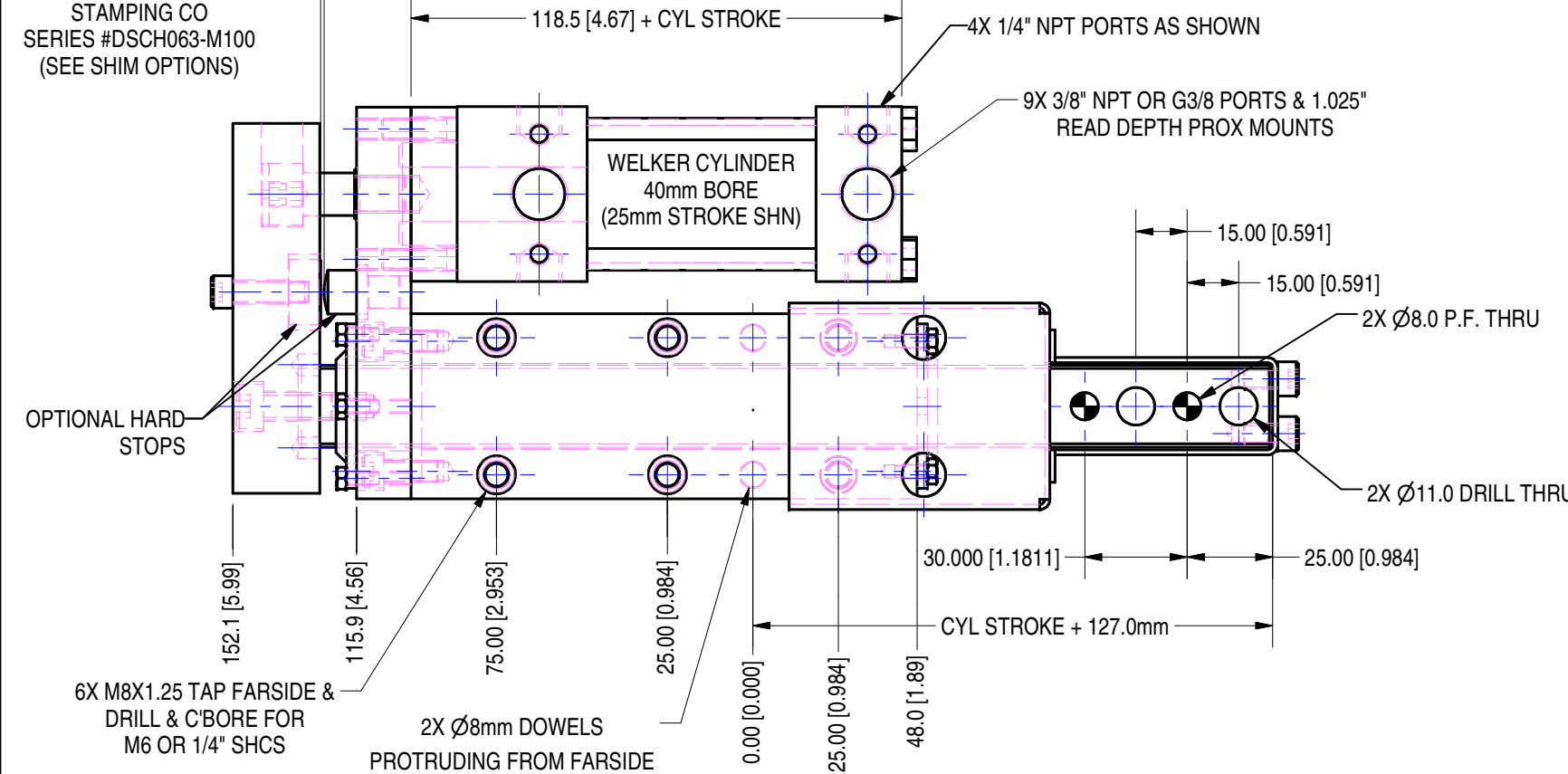


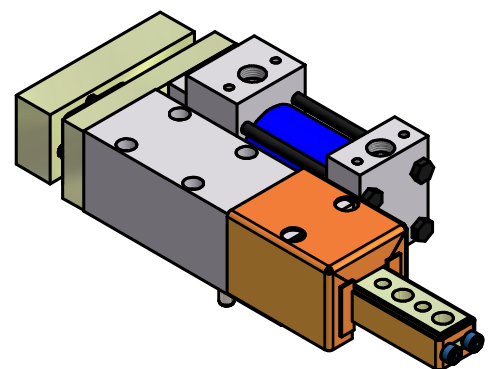
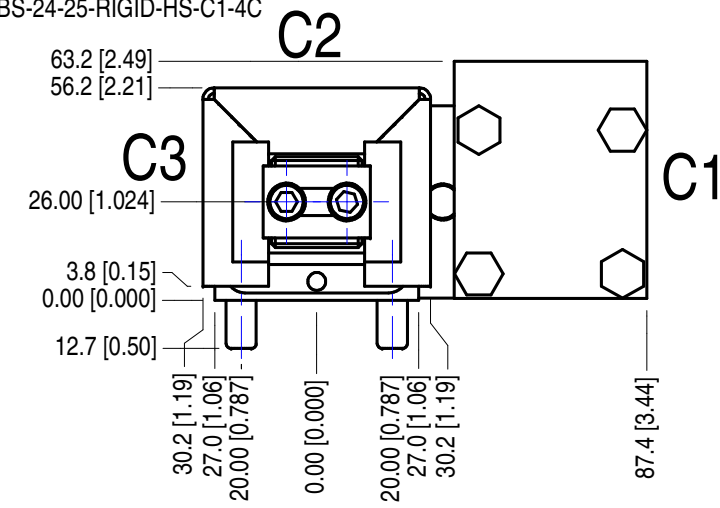
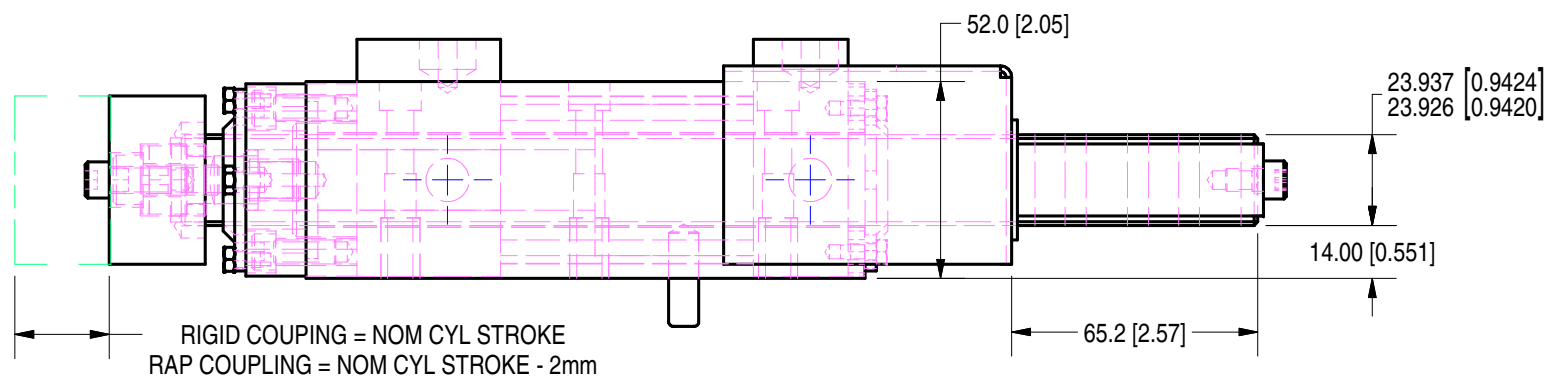
1mm GAP CAN BE SHIMMED WITH DOUGLAS STAMPING CO SERIES #DSCH063-M100 (SEE SHIM OPTIONS)



ORDER NUMBER:
 #SBS-24-{STROKE}-{CYLINDER OPTIONS}-{COUPLER}-{HARD STOP OPTION}-{RAM POSITION}-{CYL POSITION}-{SHIM}
 25-100mm _____ (SEE SHIM NOTE)
 <BLANK>, H or G _____ C1, C2, C3
 RAP OR RIGID _____ 90
 HS _____

OPTIONS NOTES:
 1) CYL OPTION: SBS-24 COMES STANDARD WITH WELKER 40mm BORE AIR CYLINDER, UNLESS HYDRAULIC OPTION, "-H", IS SPECIFIED. HYDRAULIC CYLINDERS HAVE A 40mm BORE. DO NOT OPERATE ABOVE 120 PSI. LEAVE BLANK TO ORDER A STANDARD WELKER CYLINDER WITH NPT PORTS. USE "G" FOR A WELKER CYLINDER WITH G (BSPP) PORTS.
 2) COUPLER OPTION: RAP COUPLING CAUSES THE UNIT STROKE TO BE 2mm[.08"] LESS THAN THE NOMINAL STROKE OF THE CYLINDER. UNLESS OTHERWISE SPECIFIED, THE PNEUMATIC CYLINDER COMES STANDARD WITH THE RAP COUPLING AND THE HYDRAULIC CYLINDER COMES STANDARD WITH THE RIGID COUPLING.
 3) HARD STOP OPTION: SBS-40 DOES NOT COME STANDARD WITH THE HARD STOPS. HARD STOP OPTION IS NOT AVAILABLE WITH THE HYDRAULIC CYLINDER OPTION.
 4) CYLINDER POSITION OPTION: BOTH PNEUMATIC & HYDRAULIC UNITS COME STANDARD WITH CYLINDER IN POSITION SHOWN.
 5) SHIM OPTION: SHIM SIZES CAN BE ORDERED IN .25mm INCREMENTS FROM .25mm-5mm, HARD STOP OPTION MUST BE USED IF ORDERING SHIMS. DUE TO CYL SWITCH LIMITATIONS, SHIMMING PAST 5mm IS NOT RECOMMENDED. LEAVE BLANK IF NO SHIMS ARE REQUIRED
 6) UNIT COMES WITH SHROUD AS STANDARD. TO ORDER WITHOUT SHROUD ADD "-NS" SUFFIX TO PART NUMBER.

PART NUMBER EXAMPLES:
 TO ORDER UNIT AS SHOWN WITH 25mm STROKE, RIGID COUPLING, & HARD STOP OPTION, ORDER AS:
 #SBS-24-25-RIGID-HS-C1
 TO ORDER UNIT AS SHOWN WITH 'G' PORTS, RAP COUPLING, HARD STOP, RAM ROTATED 90° & NO SHROUD:
 #SBS-24-23-G-HS-90-C1-NS
 TO ORDER UNIT AS SHOWN WITH HYDRAULIC CYLINDER, RIGID COUPLER AND NO HARD STOP:
 #SBS-24-25-H-C1
 TO ORDER UNIT AS SHOWN WITH HYDRAULIC CYLINDER, RAP COUPLER AND NO HARD STOP:
 #SBS-24-23-H-RAP-C1
 TO ORDER UNITS AS SHOWN, RIGID COUPLING, HARD STOP OPTION, & WITH A 4.75mm SHIM
 #SBS-24-25-RIGID-HS-C1-4C



SHIM NOTE:

| WHOLE MM CODES | | QUARTER MM CODES | |
|----------------|------|------------------|------|
| THK (mm) | CODE | .25 THK (mm) | CODE |
| 1 | 1 | 0.00 | 0 |
| 2 | 2 | 0.25 | A |
| 3 | 3 | 0.50 | B |
| 4 | 4 | 0.75 | C |
| 5 | 5 | | |

UNIT WEIGHT 11 LBS.
 UNITS ARE MILLIMETERS (i.e.X.XXmm [x.xxx"])
 DO NOT SCALE DRAWING

UNIT WEIGHT 23 LBS.

WELKER BEARING COMPANY

TOOL NAME: SBS-24 SERIES SHOTPIN - 25-100mm STROKE

TEMPLATE

| | | | | | |
|-----------|----------|----------|-----------|-----------|--------------|
| DATE | STATUS | DRAWN BY | DATE | CHK'D BY | ENG APPROVAL |
| 9/19/2006 | Released | GSK | 9/14/2006 | RCA | |
| SCALE | | 1:2 | | FILE NAME | SBS24L01 |