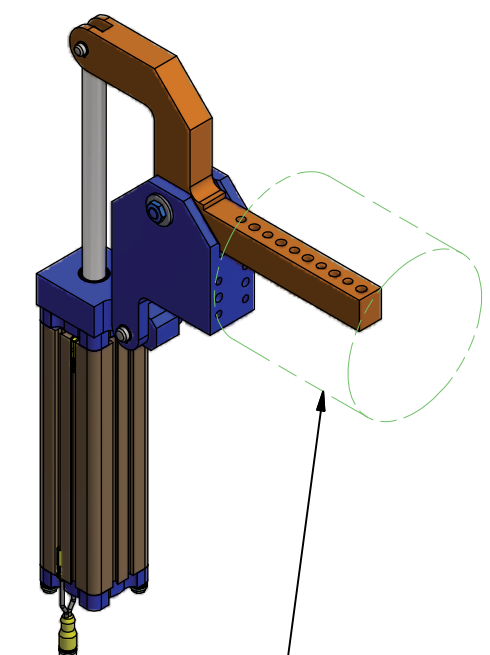
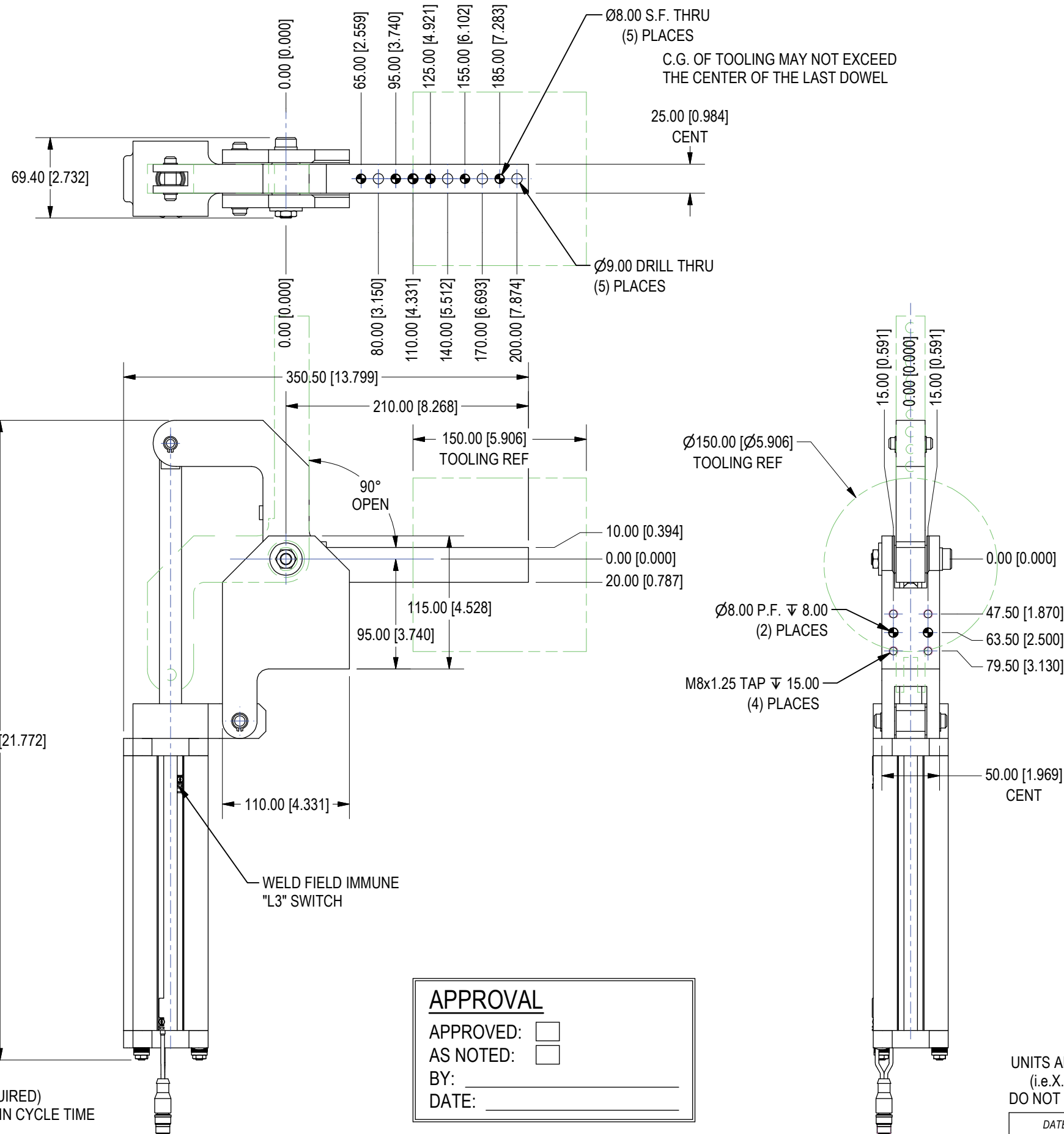


ORDER AS:S02349 -

PORT TYPE _____
N NPT PORTS
G G PORTS



ALL TOOLING MUST BE INSIDE THE TOOLING WINDOW WITH THE C.G. NO TO EXCEED THE LAST DOWEL OF THE ARM WHEN USING FULL LENGTH

9kg MAX LOAD

APPROVAL

APPROVED:

AS NOTED:

BY: _____

DATE: _____

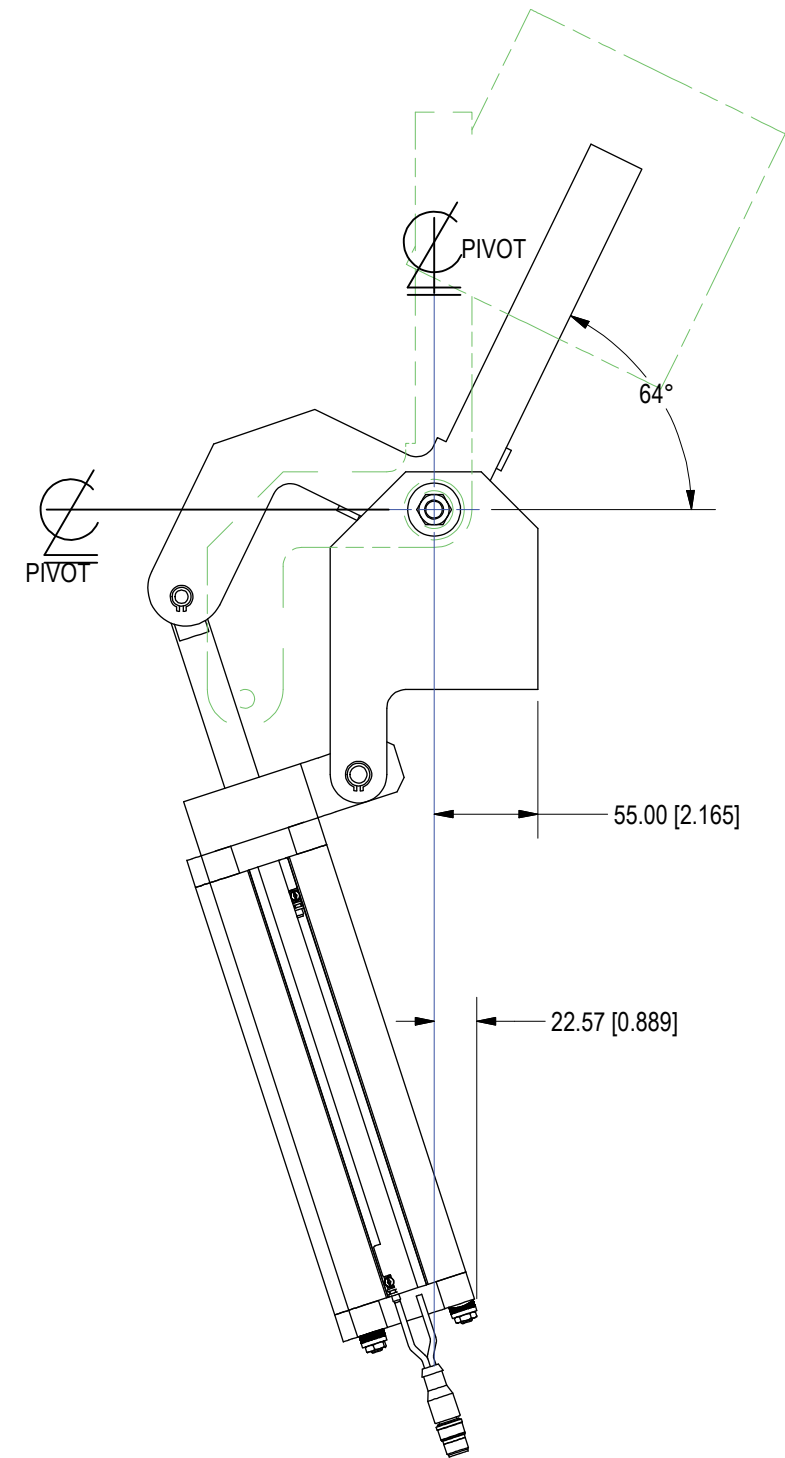
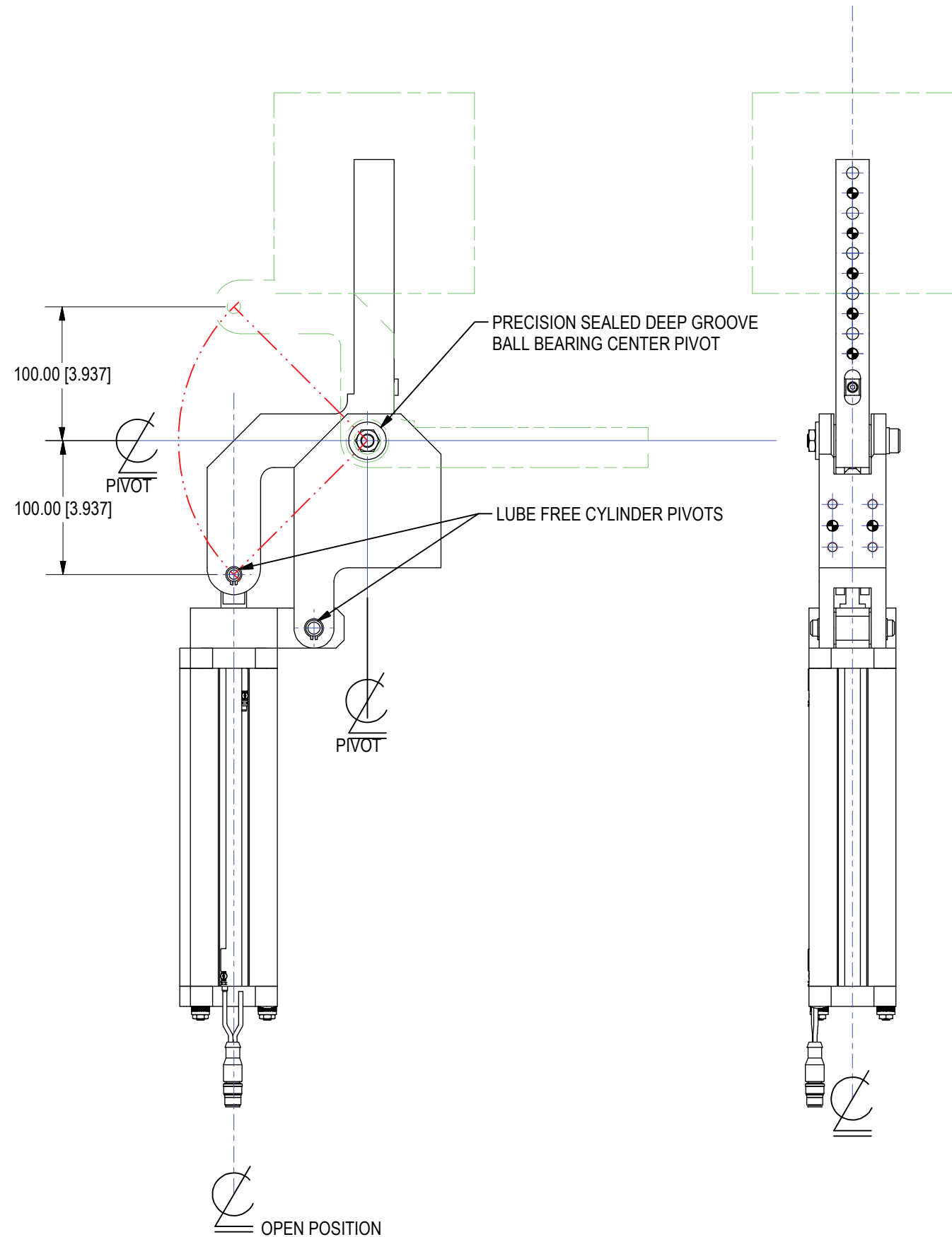
SHEET 1 OF 2

UNITS ARE MILLIMETERS (i.e.X.XXmm [x.xxx"])
 DO NOT SCALE DRAWING

DATE		STATUS		DRAWN BY		DATE	CHKD BY	ENG
9/16/2016		Released		KPL		9/16/2016	AMD	APPROVAL
SCALE		NONE		FILE		NAME		
				S02349L01				

TOOL NAME		BEARING COMPANY	
BACK UP SWING BLOCK		TEMPLATE	

NOTE:
 THIS UNIT COMES IN ONE MODEL ONLY
 CUSTOMER MAY CUT OFF UNUSED ARM
 LENGTH BEFORE MOUNTING. 50 PIECE
 PLUS ORDERS FOR SHORTER SPECIFIC ARM
 CAN BE MANUFACTURED FOR SAME PRICE



MAX CYL MOVEMENT

UNITS ARE MILLIMETERS
 (i.e.X.XXmm [x.xxx"])
 DO NOT SCALE DRAWING

APPROVAL

APPROVED:

AS NOTED:

BY: _____

DATE: _____

SHEET 2 OF 2

WELKER BEARING COMPANY					
TOOL NAME BACK UP SWING BLOCK					
TEMPLATE					
DRAWN BY KPL	DATE 9/16/2016	CHK'D BY AMD	ENG APPROVAL		
DATE 9/16/2016	STATUS Released	SCALE NONE	FILE NAME	S02349L01	