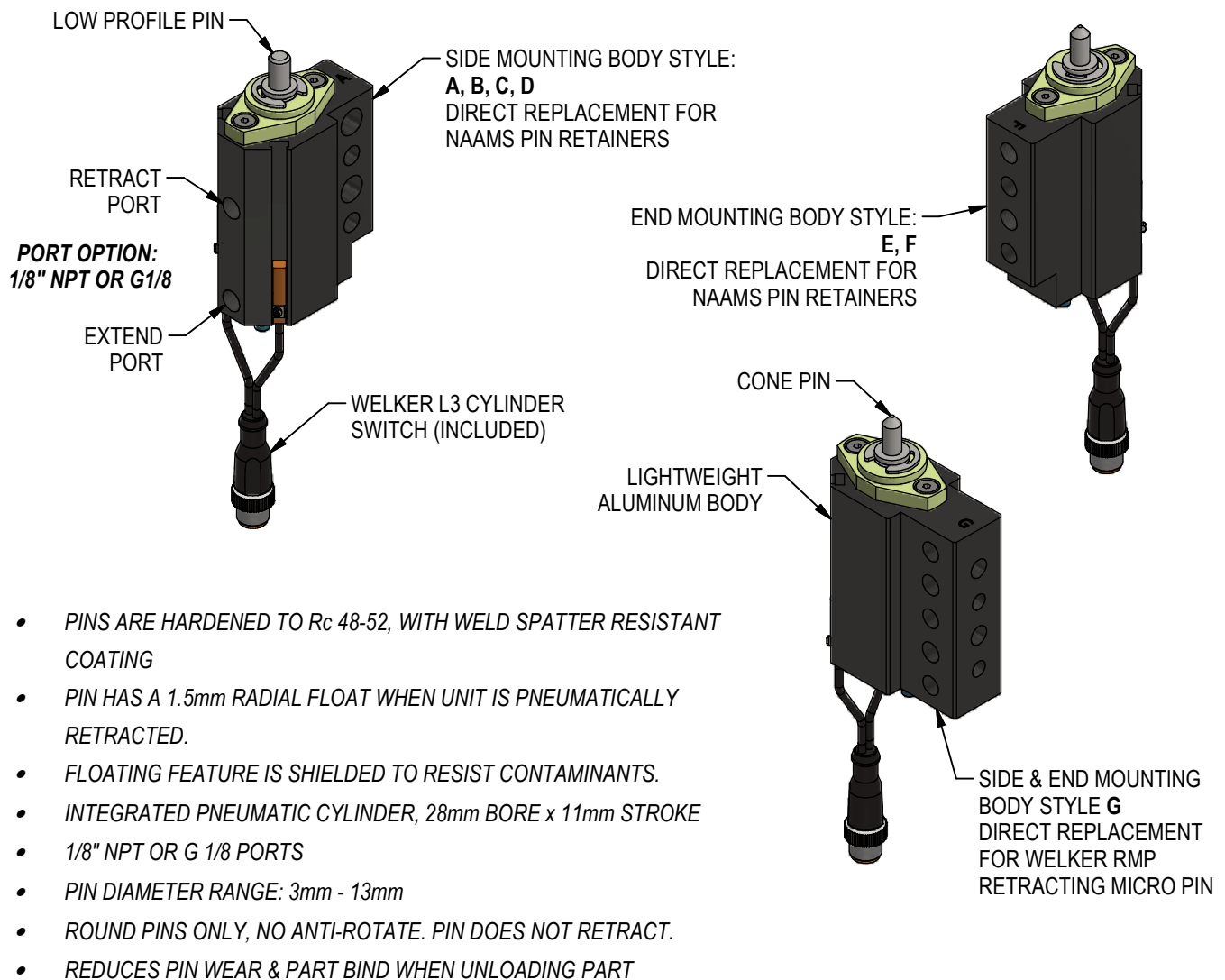


NAAMS FLOATING MICRO PIN

FLOATING PIN SEQUENCE OF OPERATION:

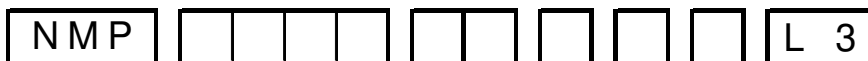
1. EXTEND CYLINDER TO LOCK PIN IN PLACE.
2. LOAD PRODUCT TO PIN AND PERFORM TOOL OPERATION.
3. RETRACT CYLINDER, ALLOWING PIN TO FLOAT.
4. UNLOAD PRODUCT FROM PIN.
5. REPEAT SEQUENCE.



UNIT WEIGHT IS APPROX 1.5 LBS
BASED ON LARGEST CONFIGURATION

RELEASED 1/15/21

ORDERING INFORMATION



Pin Diameter _____
XXXX (i.e. 8.00mm Pin = 0800)
 (3.00mm-13.00mm Dia Range)

Pin Length (mm) _____
06-12 For Pin Dia 3.00 - 8.00
06-32 For Pin Dia 8.01- 13.00

Pin Type _____
A Cone
E Low Profile

Body Style _____
A 11.0 Dia thru & 8.00 Dia Dowels (Side)
B M10 Tap thru & 8.00 Dia Dowels (Side)
C 9.0 Dia thru & 8.00 Dia Dowels (Side)
D M8 Tap thru & 8.00 Dia Dowels (Side)
E M8 Tap & 8.00 Dia Dowels (End)
F M10 Tap & 8.00 Dia Dowels (End)
G 8.5 Dia thru & 8.00 Dia Dowels (Side)
 and M8 Tap & 8.00 Dia Dowels (End)

**SEE SHEET 3
 FOR
 BODY STYLES**

Actuator _____
N 1/8 NPT
G G1/8

***WELKER
 L3 SWITCH
 INCLUDED**

SWAPPING FROM FIXED NAAMS PIN RETAINER AND STANDARD PIN TO WELKER NMP FLOATING PIN			
NAAMS PIN DIA	NAAMS STYLES ASP, ARP AQP	NAAMS LENGTH (DIMA)	WELKER EQIV PIN LENGTH
6.00	APS & ARP063M	30.0	12.0
8.00	ASP, ARP, AQP083M	30.0	12.0
	ASP, ARP, AQP084M	40.0	22.0
	ASP, ARP, AQP085M	50.0	32.0
10.00	ASP, ARP, AQP103M	30.0	12.0
	ASP, ARP, AQP104M	40.0	22.0
	ASP, ARP, AQP105M	50.0	32.0
12.00	ASP & ARP123M	30.0	12.0
	ASP & ARP124M	40.0	22.0
	ASP & ARP125M	50.0	32.0
13.00	ASP, ARP, AQP133M	30.0	12.0
	ASP, ARP, AQP134M	40.0	22.0
	ASP, ARP, AQP135M	50.0	32.0

*L3 SWITCH: DUAL SENSOR, SINGLE CONNECTOR
 4-WIRE, 4-PIN, DC (PNP) M12 X 1 QUICK DISCONNECT

*NOTE THAT SOME MID AND LOW FREQUENCY DC RESISTANCE APPLICATIONS (I.E. ALUMINUM RESISTANCE WELDING APPLICATIONS) MAY CAUSE A FAULT. IN THESE APPLICATIONS, IT IS RECOMMENDED THAT THE SENSOR BE IGNORED/BYPASSED DURING THE WELDING CYCLE.

(DO NOT SCALE DRAWING)

ENGINEERED PRODUCTS
 800-229-0890 www.welkerproducts.com

NMP BODY STYLES

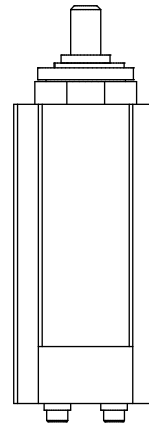
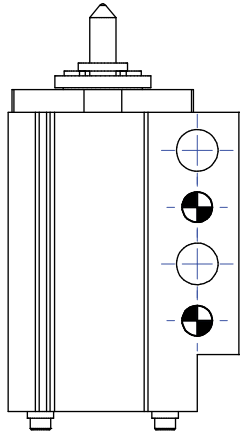
SWITCH NOT SHOWN FOR CLARITY

BODY STYLES A, B, C & D

DIRECT
REPLACEMENT
FOR NAAMS PIN
RETAINERS

SIDE MOUNTING

SEE SHEET 4 FOR
DIMENSIONS

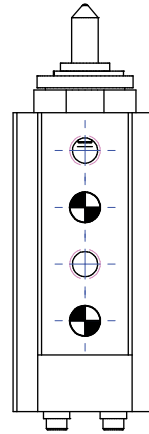
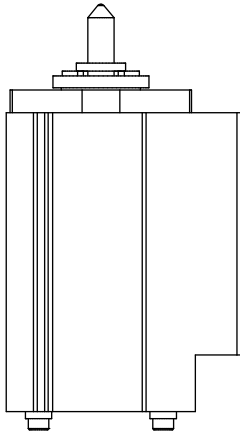


BODY STYLES E & F

DIRECT
REPLACEMENT
FOR NAAMS PIN
RETAINERS

END MOUNTING

SEE SHEET 5 FOR
DIMENSIONS

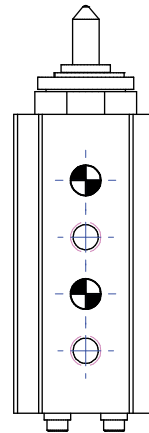
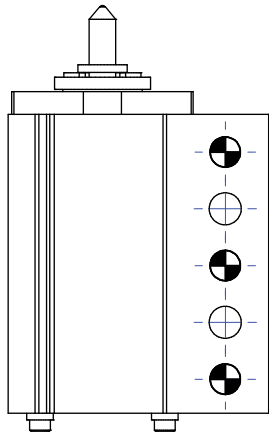


BODY STYLE G

DIRECT
REPLACEMENT
FOR WELKER RMP
RETRACTING
MICRO PIN

SIDE & END
MOUNTING

SEE SHEET 6 FOR
DIMENSIONS

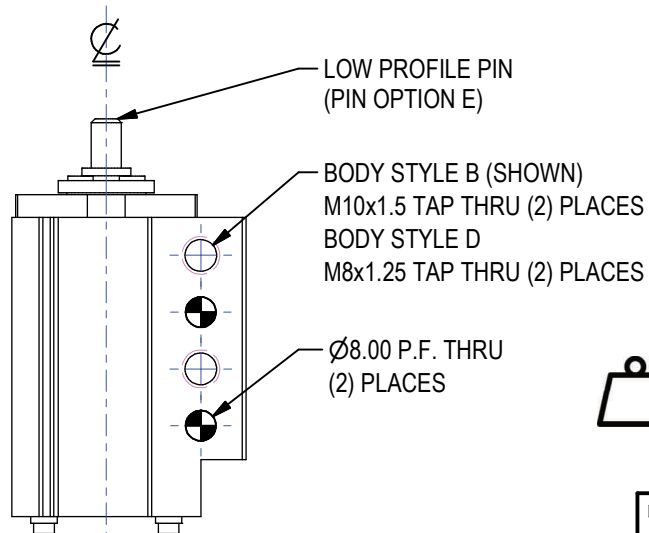
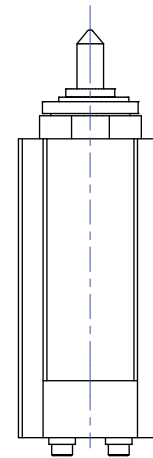
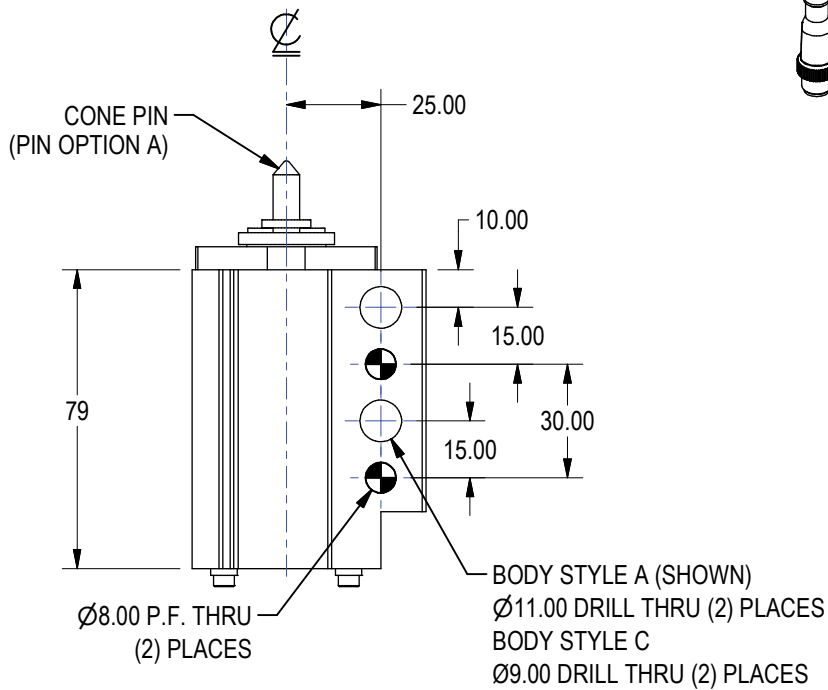
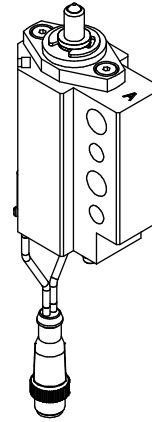
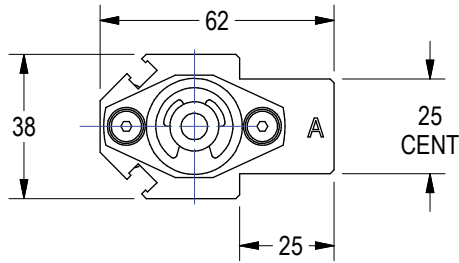


(DO NOT SCALE DRAWING)

WELKER
ENGINEERED PRODUCTS
800-229-0890 www.welkerproducts.com

GENERAL DIMENSIONS: BODY STYLES A, B, C & D*

SIDE MOUNT



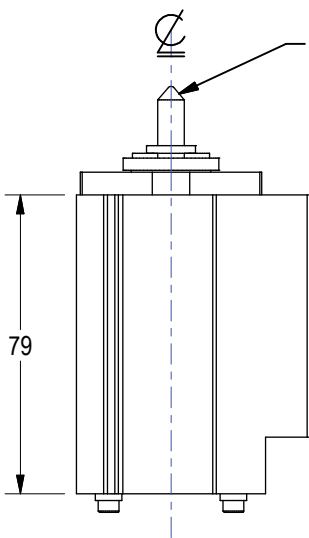
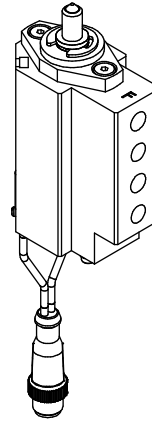
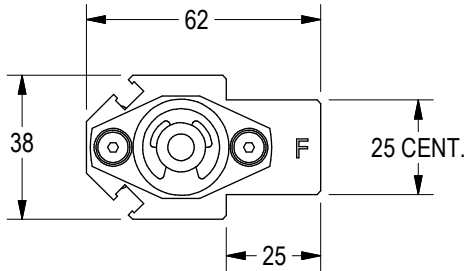
UNIT WEIGHT IS APPROX
1.5 LBS BASED ON LARGEST
CONFIGURATION

(DO NOT SCALE DRAWING)

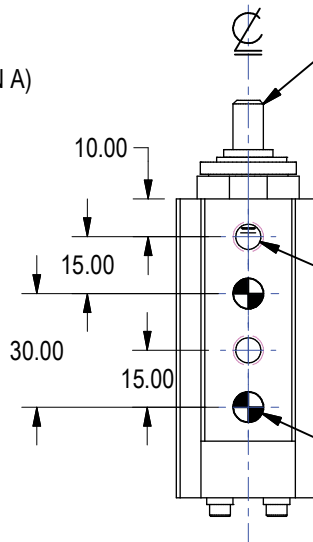
WELKER
ENGINEERED PRODUCTS
800-229-0890 www.welkerproducts.com

GENERAL DIMENSIONS: BODY STYLES E & F*

END MOUNT



CONE PIN
(PIN OPTION A)



LOW PROFILE PIN
(PIN OPTION E)

BODY STYLE E (SHOWN)
M8x1.25 TAP ∇ 15.00 (2) PLACES
BODY STYLE F
M10x1.5 TAP ∇ 15.00 (2) PLACES
 \varnothing 8.00 P.F. ∇ 15.00
(2) PLACES



UNIT WEIGHT IS APPROX
1.5 LBS BASED ON LARGEST
CONFIGURATION

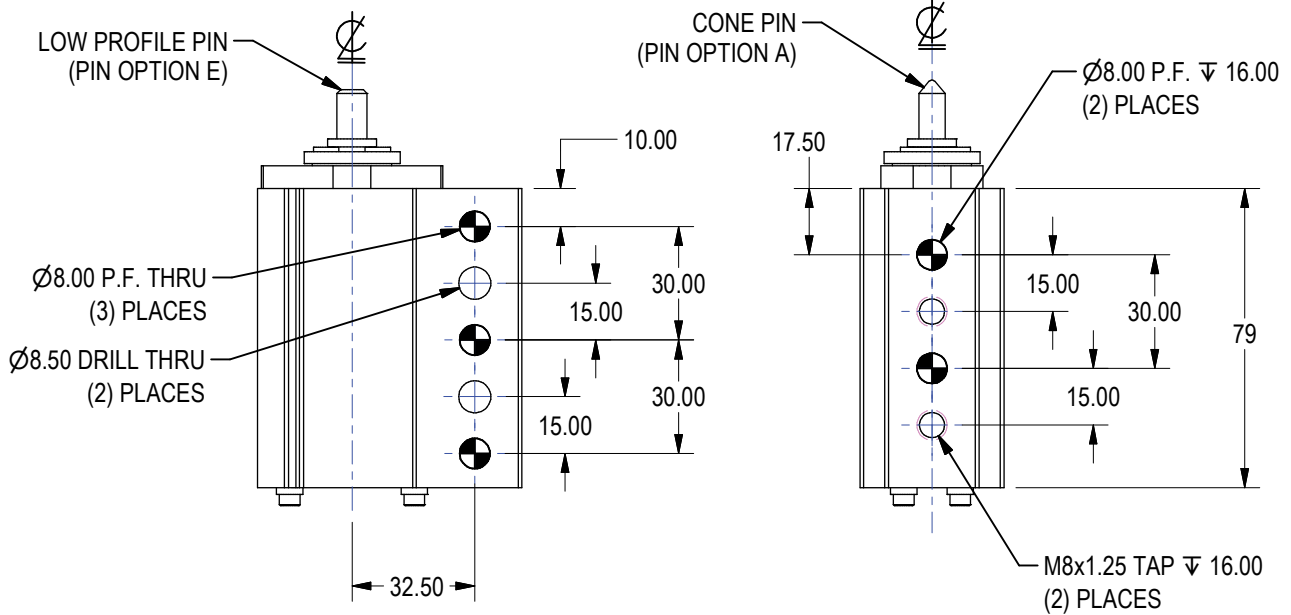
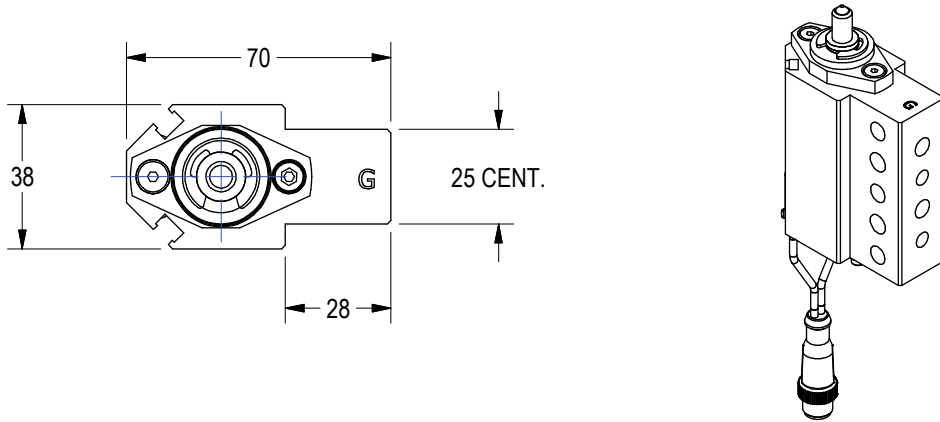
*SWITCH INCLUDED, NOT SHOWN FOR CLARITY

(DO NOT SCALE DRAWING)

GENERAL DIMENSIONS: BODY STYLE G*

SIDE & END MOUNT

DIRECT REPLACEMENT FOR WELKER RMP
RETRACTING MICRO PIN



UNIT WEIGHT IS APPROX
1.5 LBS BASED ON LARGEST
CONFIGURATION

(DO NOT SCALE DRAWING)



*SWITCH INCLUDED, NOT SHOWN FOR CLARITY

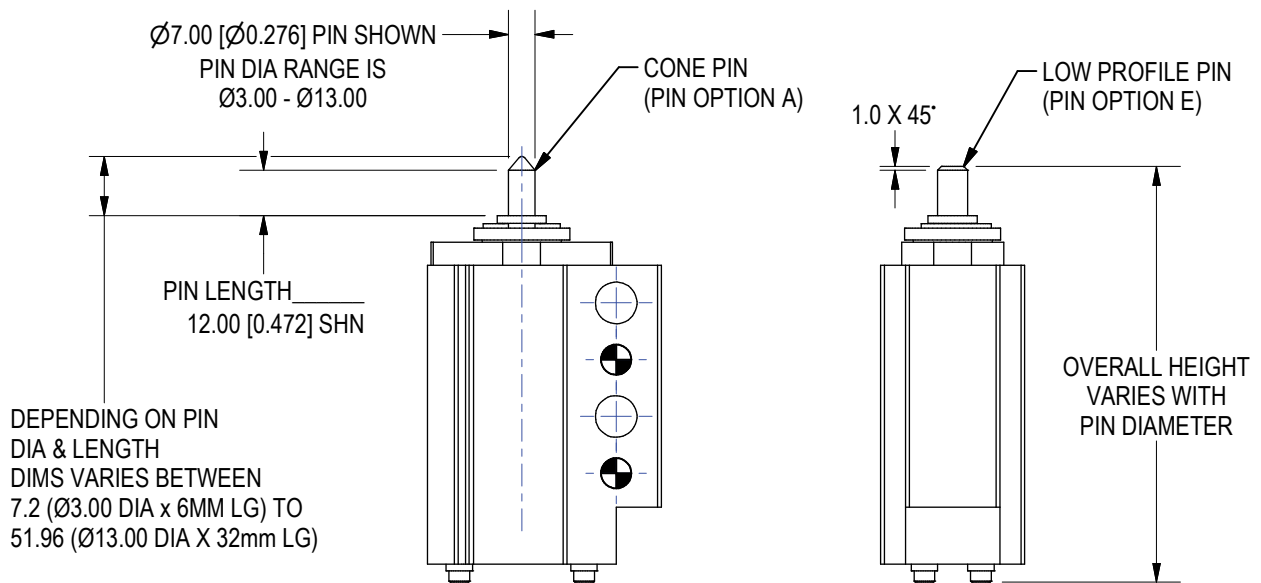
REPLACEMENT PIN INFORMATION



Pin Diameter _____
XXXX (i.e. 8.00mm Pin = 0800)
 (3.00mm-13.00mm Dia Range)

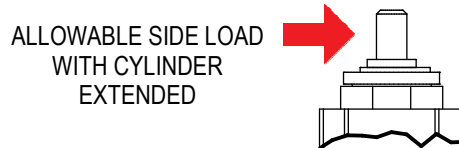
Pin Length (mm) _____
06-12 For Pin Dia 3.00 - 8.00
06-32 For Pin Dia 8.01- 13.00

Pin Type _____
A Cone
E Low Profile



SWAPPING FROM FIXED NAAMS PIN RETAINER AND STANDARD PIN TO WELKER NMP FLOATING PIN			
NAAMS PIN DIA	NAAMS STYLES ASP, ARP AQP	NAAMS LENGTH (DIM A)	WELKER EQUIV PIN LENGTH
6.00	APS & ARP063M	30.0	12.0
8.00	ASP, ARP, AQP083M	30.0	12.0
	ASP, ARP, AQP084M	40.0	22.0
	ASP, ARP, AQP085M	50.0	32.0
10.00	ASP, ARP, AQP103M	30.0	12.0
	ASP, ARP, AQP104M	40.0	22.0
	ASP, ARP, AQP105M	50.0	32.0
12.00	ASP & ARP123M	30.0	12.0
	ASP & ARP124M	40.0	22.0
	ASP & ARP125M	50.0	32.0
13.00	ASP, ARP, AQP133M	30.0	12.0
	ASP, ARP, AQP134M	40.0	22.0
	ASP, ARP, AQP135M	50.0	32.0

LOAD INFORMATION



CYLINDER LINE PRESSURE	ALLOWABLE SIDE LOAD
60 PSI	10 LBS
70 PSI	15 LBS
80 PSI	20 LBS

(DO NOT SCALE DRAWING)

