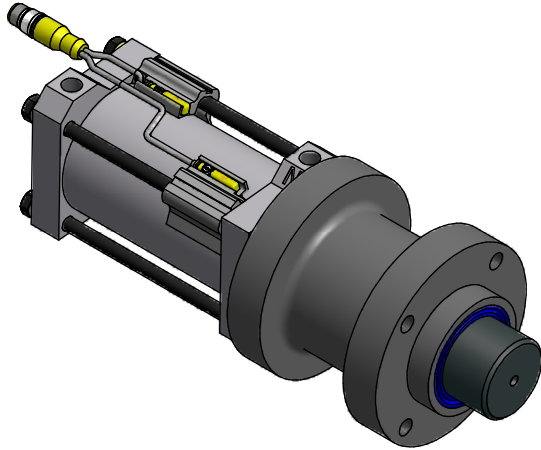
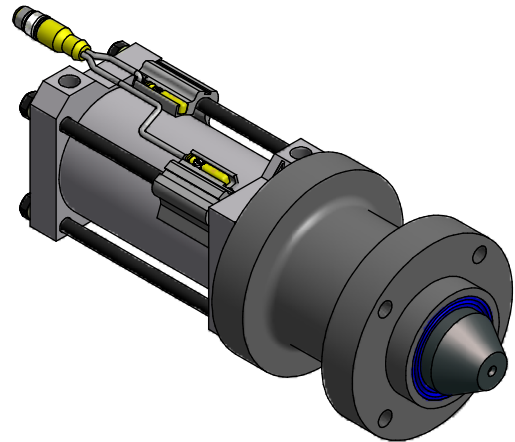


## BP4 SERIES LOCKOUT PIN



FLAT NOSE OPTION SHOWN  
FOR LOCKOUT APPLICATIONS  
(OPTIONAL CYLINDER SWITCH SHOWN)



CONICAL NOSE OPTION SHOWN FOR LOCKOUT  
AND LOCATIONAL APPLICATIONS  
(OPTIONAL CYLINDER SWITCH SHOWN)

### Lockout Pin Features

Pneumatic, double acting retractable pin

Optional spring extend (air loss triggers  
mechaical spring extension)

Pneumatic 70mm bore integrated cylinder

Optional cylinder switch available

5000 lbf lockout load capacity

---

**Lockout Applications:** Turntables, Trunnion Fixtures, Turn-over Units, Lifters, Slides, Safety Compliance

## ORDERING INFORMATION

B
P
4
N
0
2
5
X
0
1
2
0
0
0
S

**Pin Dia**

4 48mm Nominal Pin Dia

**Stroke**

025 25mm Stroke  
050 50mm Stroke

**Actuator**

01 Pneumatic 70mm Bore - Single Rod - NPT  
02 Pneumatic 70mm Bore - Single Rod - G Port  
03 Pneumatic 70mm Bore - Double Rod - NPT Port  
04 Pneumatic 70mm Bore - Double Rod - G Port

**Pin Nose**

1 Conical  
2 Flat

**Spring Extend**

0 No spring  
E Spring Extend

**Switch**

00 No Switch  
L0 See Switch Information

**Precision**

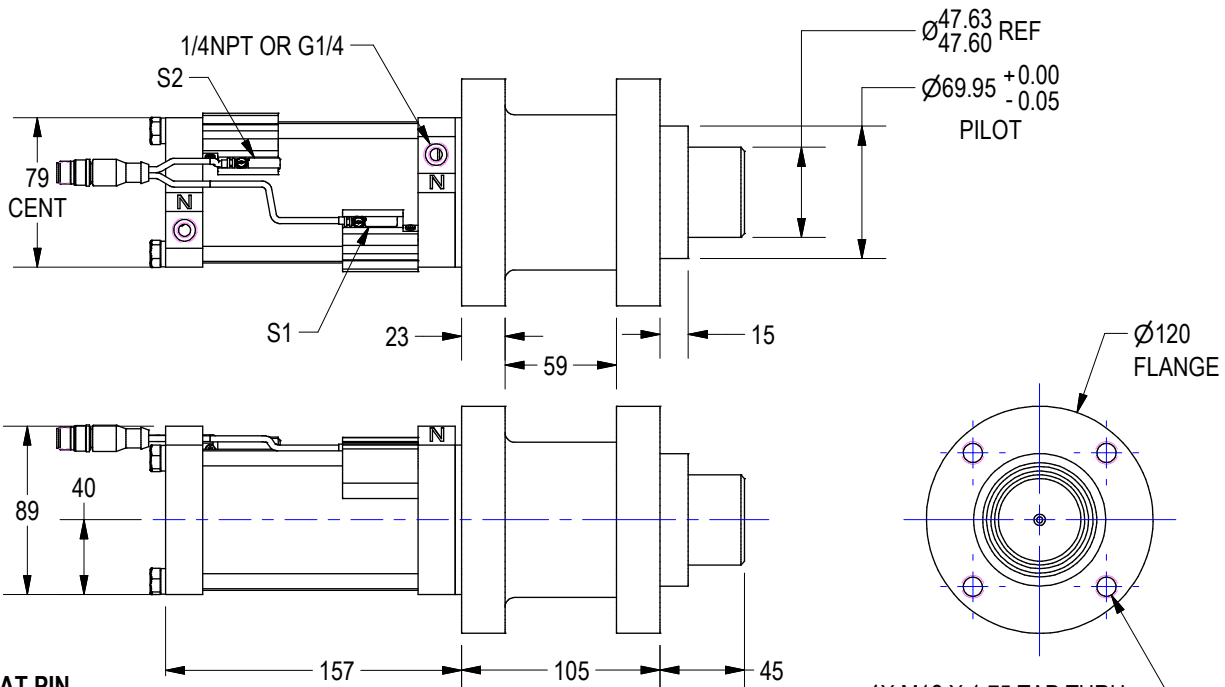
S Standard Tolerance ( $\pm .010$ " Extended Ram Axial Lash-Lockout Only at 2500lbf)  
H High Locational Tolerance ( $\pm .005$ " Extended Ram Axial Lash-Lock & Locate at 1000lbf)

### Switch Information

<b>L0 (Cylinder Switch)</b>	BIM-UNT-2A P6X-0.2M-RSC 4.4T	Turck	4-Wire, 4-Pin, DC M12 X 1 (PNP) Quick Disconnect
-----------------------------	------------------------------	-------	--

(DO NOT SCALE DRAWING)

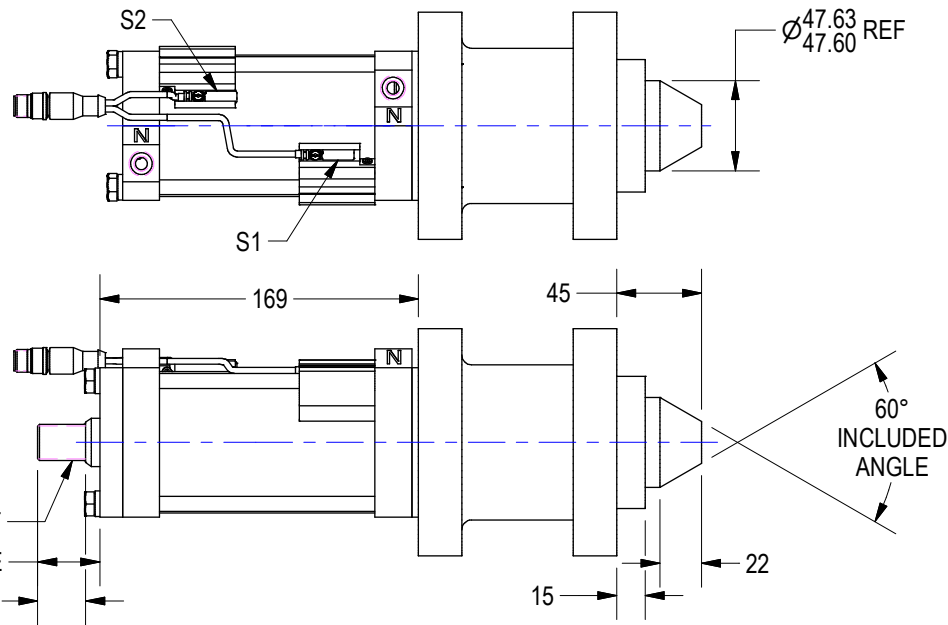




**FLAT PIN**  
**RETRACTED POSITION**  
 SHOWN WITH CYLINDER SWITCH OPTION "L0"

4X M12 X 1.75 TAP THRU  
 EVENLY SPACED ON Ø100 B.C.  
 (CLEARANCE FOR M10 SCREWS  
 FROM FAR SIDE)

**CONICAL PIN**  
**RETRACTED POSITION**  
 SHOWN WITH CYLINDER SWITCH OPTION "L0"



3/4" - 16 UNF  
 33 + STROKE  
 26

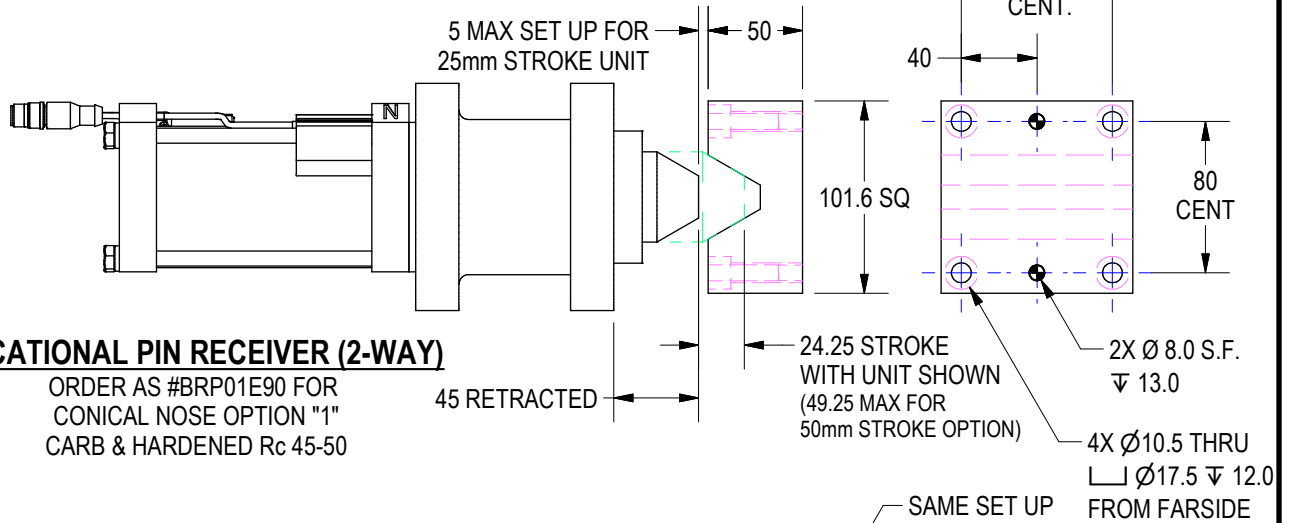
**CONICAL PIN**  
**RETRACTED POSITION**  
 SHOWN WITH CYLINDER SWITCH OPTION "L0" &  
 DOUBLE ROD OPTION

- NOTES:**
- ALL RAMS ARE CASE HARDENED Rc 50-55, 1.0mm DEEP MIN.
  - CYLINDERS INCLUDE MAGNETIC PISTON
  - OPTIONAL SPRING EXTEND  
 (AIR LOSS TRIGGERS MECHANICAL SPRING EXTENSION)
  - MAX WEIGHT WITH 50mm STROKE: 21.5 lbf

(DO NOT SCALE DRAWING)

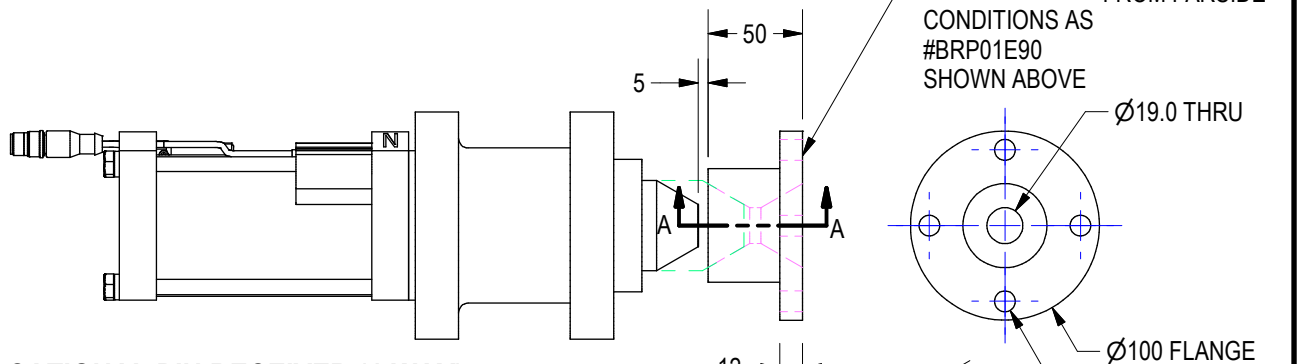
**WELKER**  
 ENGINEERED PRODUCTS  
 248-528-2020 www.e-welker.com

# BP4 RECEIVERS



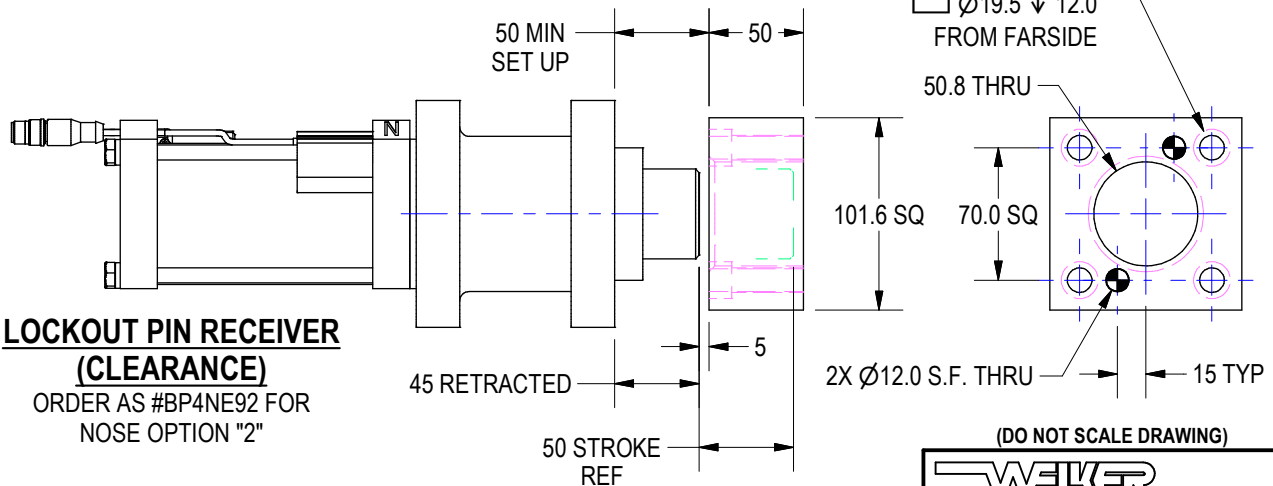
## LOCATIONAL PIN RECEIVER (2-WAY)

ORDER AS #BRP01E90 FOR CONICAL NOSE OPTION "1" CARB & HARDENED Rc 45-50



## LOCATIONAL PIN RECEIVER (4-WAY)

ORDER AS #BRP01E91 FOR CONICAL NOSE OPTION "1" CARB & HARDENED Rc 45-50



## LOCKOUT PIN RECEIVER (CLEARANCE)

ORDER AS #BP4NE92 FOR NOSE OPTION "2"

(DO NOT SCALE DRAWING)

**WELKER**  
ENGINEERED PRODUCTS  
248-528-2020 www.e-welker.com